

March 19, 2022:

CAC has updated these guidelines based on the latest information from the CDC. As of **March 1**, all CAC employees and independent contractors (instructors and tech/event personnel) will be fully vaccinated. All new employees or independent contractors must be vaccinated in order to work at CAC.

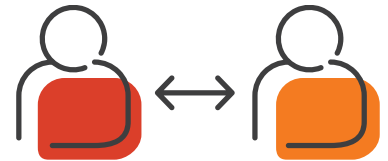


MASK UPDATE

Masks are required in CAC for anyone who is not vaccinated. If you are fully vaccinated you do not need to wear a mask while at CAC. Staff and instructors are encouraged (but not required) to wear a mask. Event crew working in the theaters are required to wear masks.

WHAT'S OPEN? WHAT'S CLOSED?

- Hal Gomer Gallery is open.
- MakerSpace Open Studio and Ceramics Open Studio are open by appointment through our web site; adult students will sign in at the front desk.
- Classrooms are open for pre-registered students only.
- Offices are open Monday through Thursday and Saturday and Sunday with limited staff. All staff work remotely on Fridays. The most efficient way to communicate with staff is via email.
- Performances: Please check out the website at <https://www.chesapeakearts.org/rental-status> for updated Rental/Performance Status and Guidelines.



MAINTAIN SOCIAL DISTANCE

- Limit the number of students in each class; adopt social distancing in all classes and maintain 6 feet between all class participants – through spacing between ceramic wheels, desks/tables, specific locations for each dancer in the dance studio, etc.
- Parents must drop off children at CAC front entrance for classes. Parents may not wait in CAC hallways, but are encouraged to wait in their cars. A safe pick-up process for children is carried out for each class, managed by CAC staff and adhering to social distancing. NEW: Parents of children ages 5 and under may remain in the building during their child's class. All other caregivers/parents will check their child in at the front door.
- Students must bring their own water bottles to class.



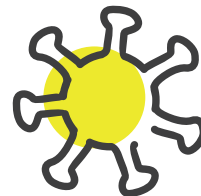
CLEANING PROTOCOLS

- Expanded cleaning of CAC classrooms, theatres, restrooms, and hallways.
- High-quality cleaning products will be used to disinfect all areas of the building on a continual basis.
- Staff members are positioned to support building operations and cleanliness.
- Hand sanitizer is provided in every classroom.
- All restrooms and commonly-touched areas are wiped down on an ongoing basis.



ENTRANCE/EXIT PROTOCOLS

- Only students, visitors with an appointment with staff, or visitors coming to see the galleries are admitted to CAC.
- The front door to CAC is locked and patrons will be buzzed into the building.
- Upon entrance to CAC, a staff member will check-in all patrons and record their visit, and remind guests about our new mask guidelines (above).
- Patrons should sanitize their hands upon entrance.



CAC RESPONSE TO COVID EXPOSURE

Staff are conducting daily self-health checks and will not come in to CAC if they are sick or showing COVID symptoms. If a staff member, instructor, or student has been exposed to COVID-19 or tests positive for COVID-19, CAC will conduct contact tracing to the best of our ability using our entrance check-in log. We will contact any potentially impacted individuals. Per the CDC: People with COVID-19 should isolate for 5 days and if they are asymptomatic or their symptoms are resolving (without fever for 24 hours), follow that by 5 days of wearing a mask when around others to minimize the risk of infecting people they encounter. Potentially infected or exposed individuals will not be allowed back at CAC until 10 days after their exposure or a negative test.

ADULT/PARENT COVID AGREEMENT:

If someone in your household is diagnosed with COVID-19 or your child is exposed to COVID-19, you will keep your child home for 10 days and notify us immediately. If someone in your household develops new cough, shortness of breath or TWO of the following: sore throat, chills, muscle pain, headache, new loss of taste or smell, you will get that person tested and notify us immediately. If that person tests positive, you will keep your child or yourself (adult student) home for 10 days. ADDITIONALLY, any adult who develops the above symptoms should not come for drop off or pick-up of children until a negative test result is achieved.